

## TINA2S Quick Guide

## | NOTES

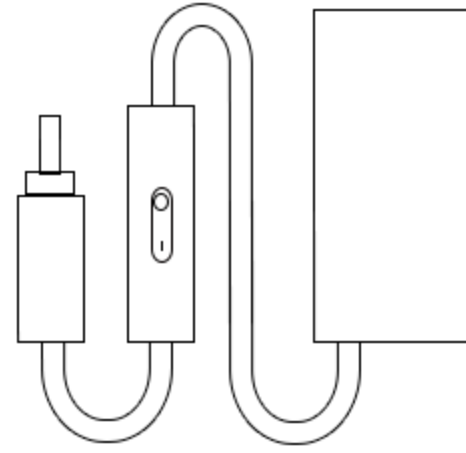
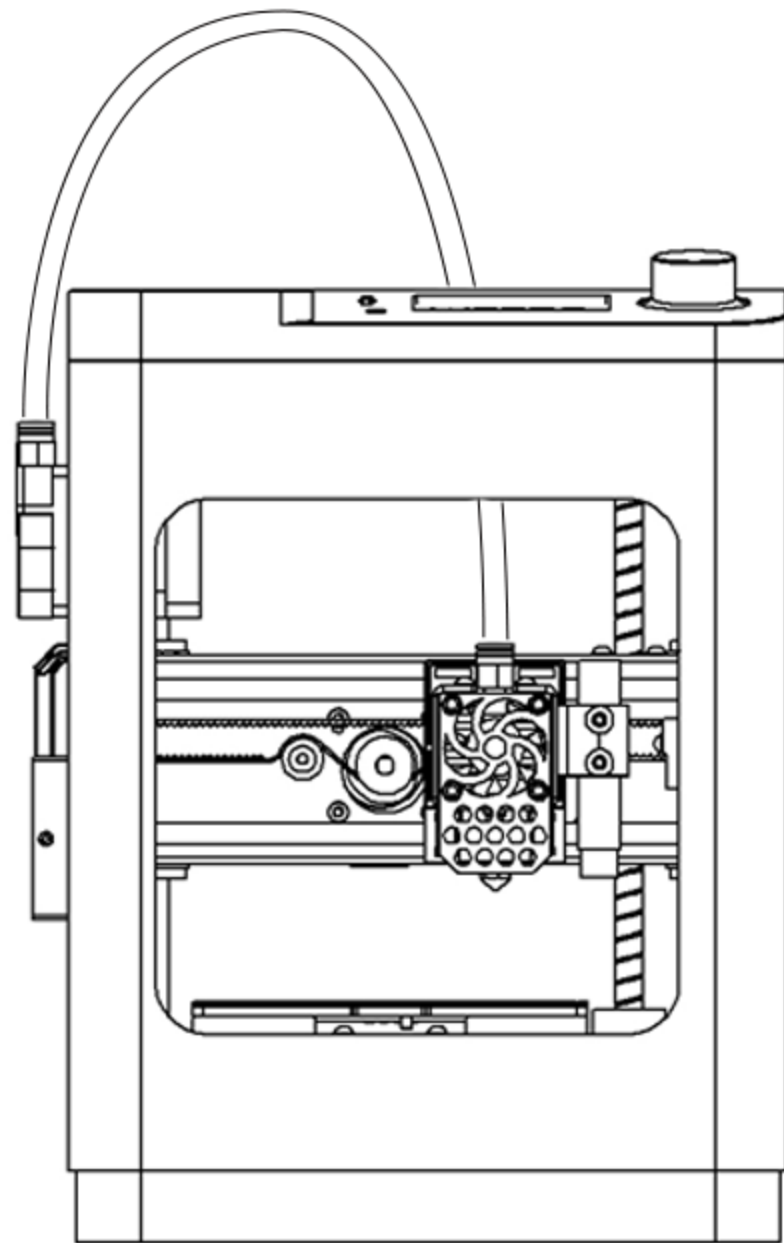
Please read this guide before using the device. Once you use this product, it means that you have read and accepted the following safety warnings.

For the full manual, please visit our support page at <https://sansystechnology.com/support/>  
**OR** scan the QR code on the printer. For any questions, contact us at: [sansysconnect@gmail.com](mailto:sansysconnect@gmail.com)

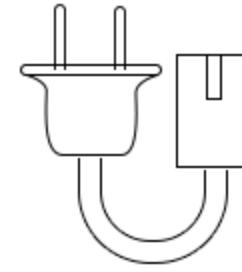
## | SAFETY WARNINGS

1. Do not touch the nozzle or stepper motors, when the 3D printer is printing or just finished the printing job, the nozzle temperature is up to 230°C.
2. Do not expose this device to water or moisture of any kind. Do not place drinks or other containers with moisture on or near the device. If moisture does get in or on the device, immediately unplug it from the power outlet and allow it to fully dry before reapplying power.
3. Prior to operation, check power cord for physical damage. Don't use if physical damage has occurred.
4. Before plugging the unit into a power outlet, ensure that the outlet provides the same type and level of power required by the device.
5. Unplug this device from the power source when not in use.
6. Take care to prevent damage to the power cord. Do not allow it to become crimped, pinched, walked on, or become tangled with other cords. Ensure that the power cord does not present a tripping hazard.
7. Never unplug the unit by pulling on the power cord. Always grasp the connector head or adapter body.
8. Ensure that the 3D printer is turned off and unplugged from its power source before making repairs or performing service.
9. For more information, please refer to the video, manual, and software from our site: <https://sansystechnology.com/support/>

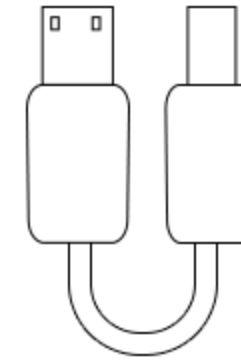
# ACCESSORIES



power cable



power supply



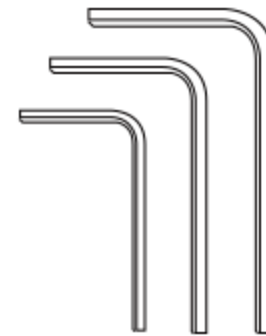
USB



filament



solid glue



1.5/2.0/2.5mm  
L wrench



6mm  
wrench



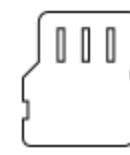
0.4mm  
nozzle



card reader



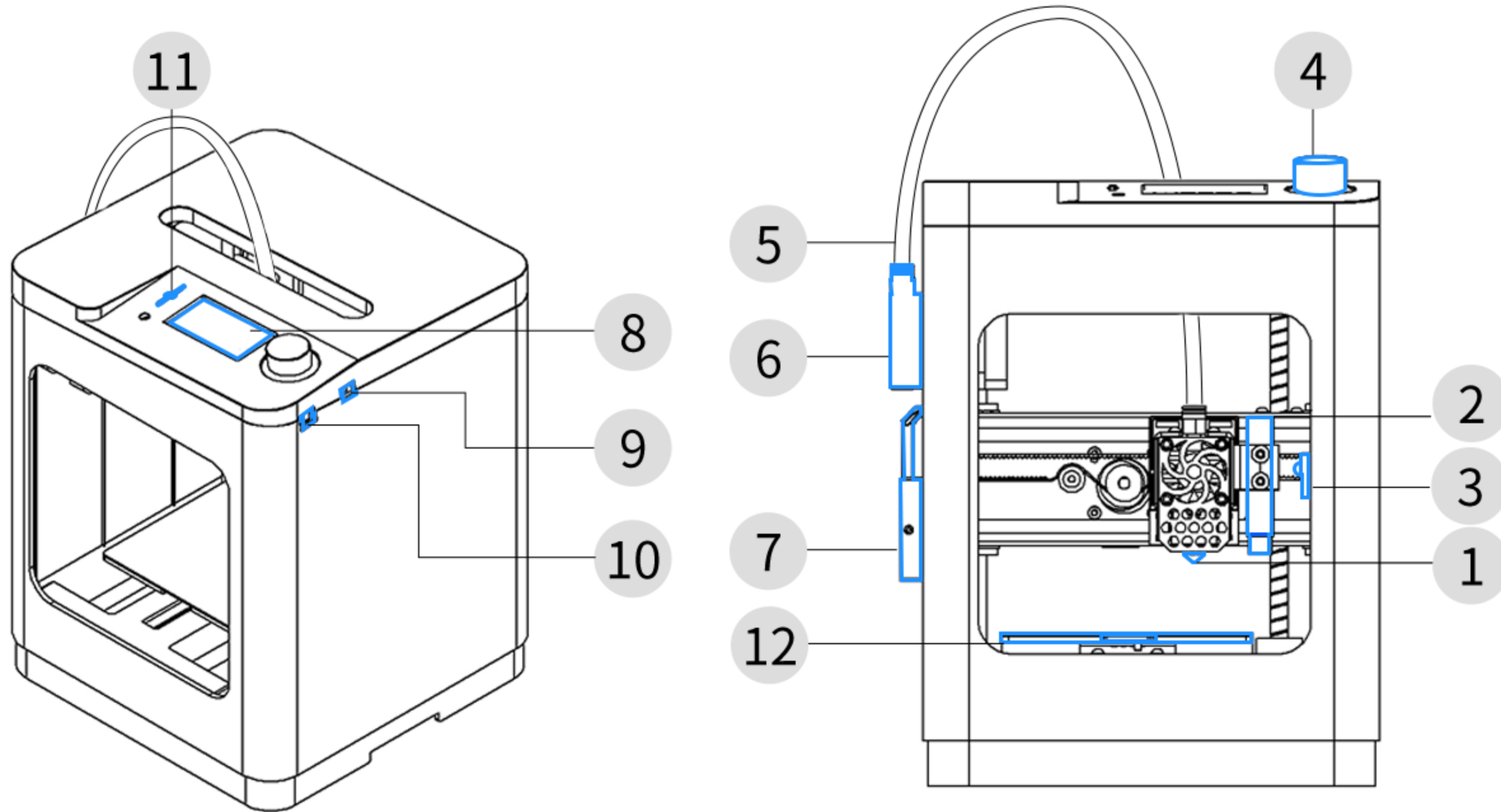
Type-C



TF card

test models  
software  
manual and video

# | PRODUCT OVERVIEW



1. Hotend

2. Proximity Sensor

3. X endstop

4. Knob Button

5. Filament Tube

6. Extruder

7. Filament Holder

8. Screen

9. Power Socket

10.USB Socket

11.TF Card Socket

12.Platform

## | SPECIFICATION

<b>Model</b> TINA2S	<b>Product Volume</b> 210*210*290 mm	<b>Build Volume</b> 100*105*100 mm	<b>Motherboard</b> Silent TMC2208
<b>Weight</b> 3Kg/6.6lbs	<b>Nozzle Diameter</b> 0.4mm	<b>Power Supply</b> 100V- 240V/12V@5A,60W	<b>Platform</b> Flexible Spring Steel
<b>Nozzle Temp</b> ≤245°C	<b>Heatbed Temp</b> ≤60°C	<b>Speed</b> ≤200mm/s	<b>Input</b> TF Card / APP / WIFI / USB
<b>Layer Thickness</b> 0.1~0.4mm	<b>Printing Precision</b> ±0.1mm	<b>Leveling</b> 3 points Auto Leveling	<b>Environmental</b> 15°C - 25°C

## | SOFTWARE

<b>Slicing Software</b> Wiibuilder (WIN/macOS) Cura (WIN/macOS) OctoPrint (Pi OS/Linux)	<b>Slicer Input File</b> STL/OBJ/AMF	<b>Printing Format</b> Gcode	<b>APP</b> Poloprint Cloud (Android/iOS) PP Local (Android/ iOS)
--	---	---------------------------------	--

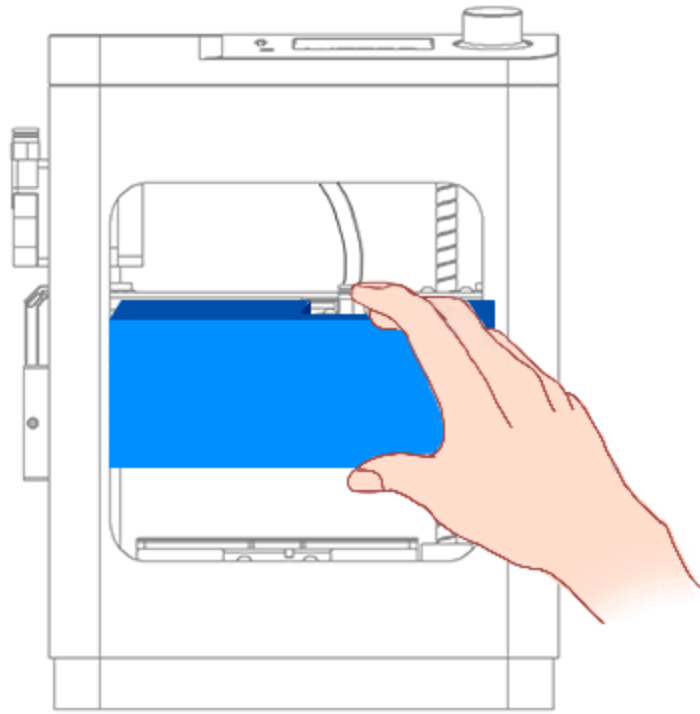
## | FILAMENT

<b>Filament Type</b> PLA / PLA+ / TPU	<b>Filament Diameter</b> 1.75mm	<b>Filament Temperature</b> <230°C	<b>Filament on Holder</b> ≤500g
--	------------------------------------	---------------------------------------	------------------------------------

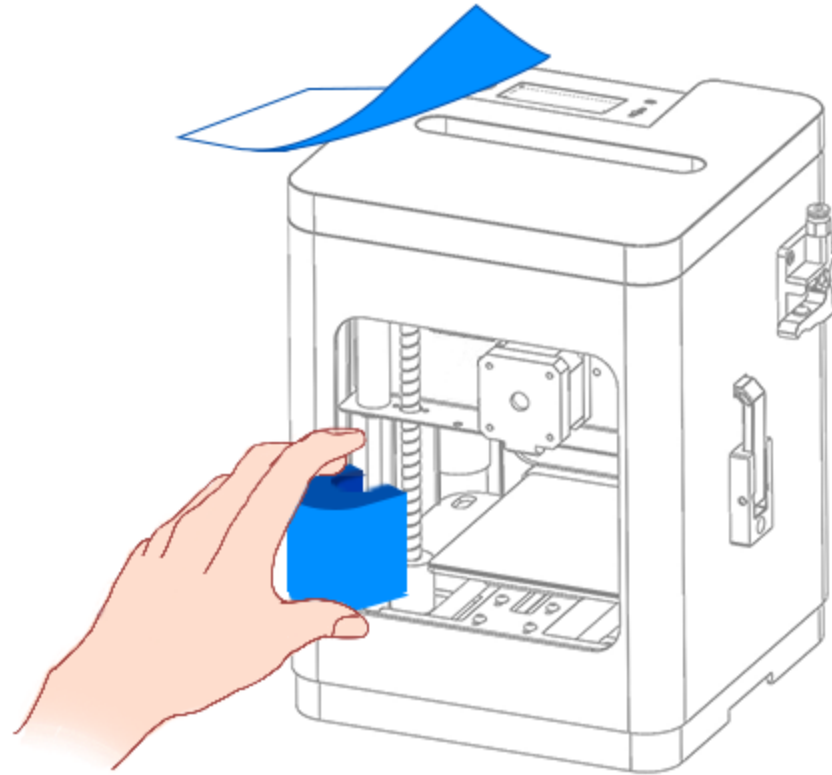
Please use the filament provided by our company. Filaments have different specifications, which can clog and damage the nozzle. If the 3D printer fails due to the 3-party, the warranty will not be granted.

If the filaments are not used for a long time, please keep them sealed.

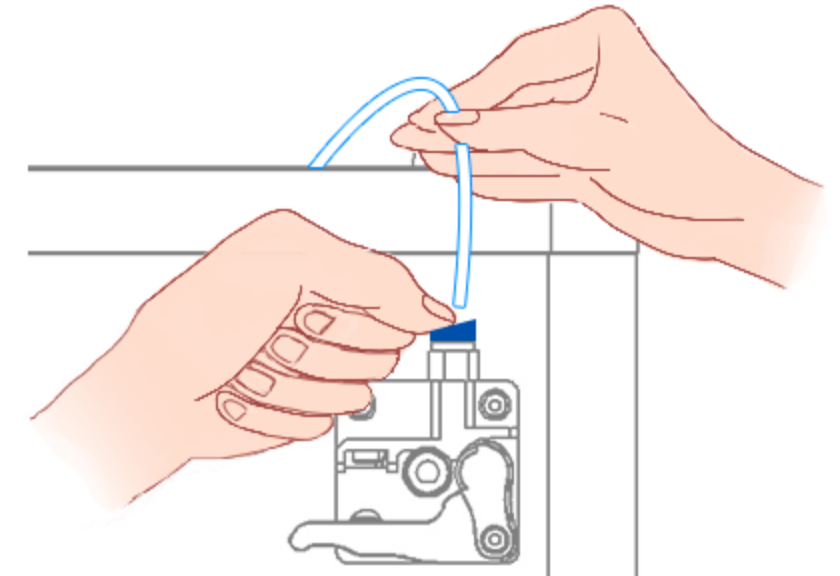
# UNPACKING



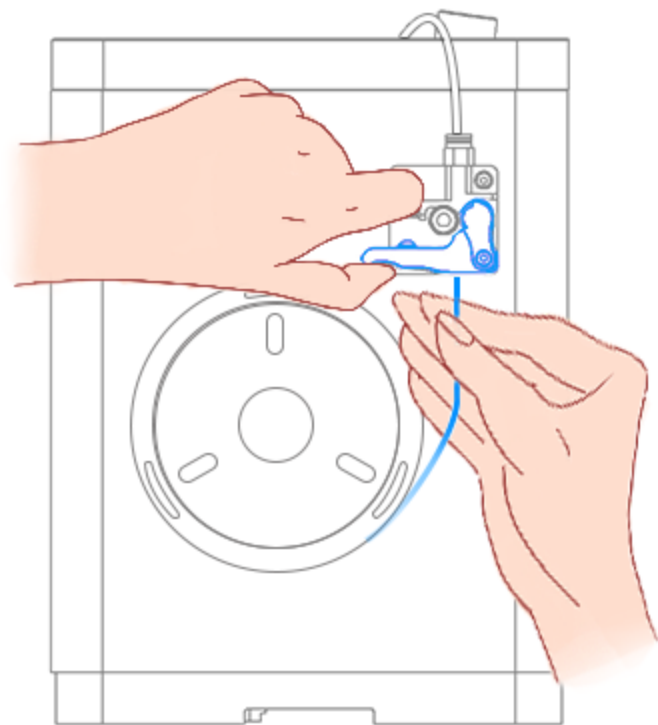
1. Unpack and remove foam.



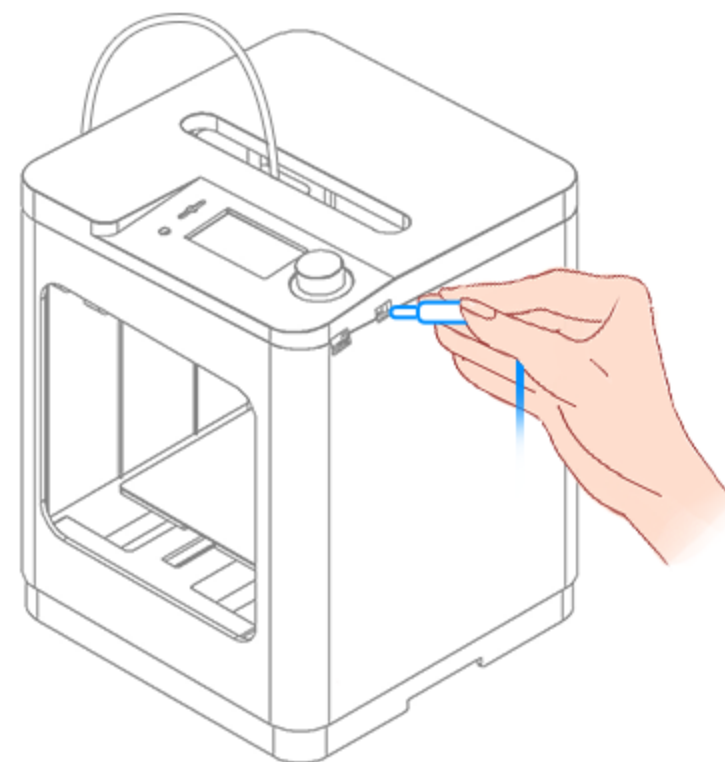
2. Remove the tip and shaft coupling shell.



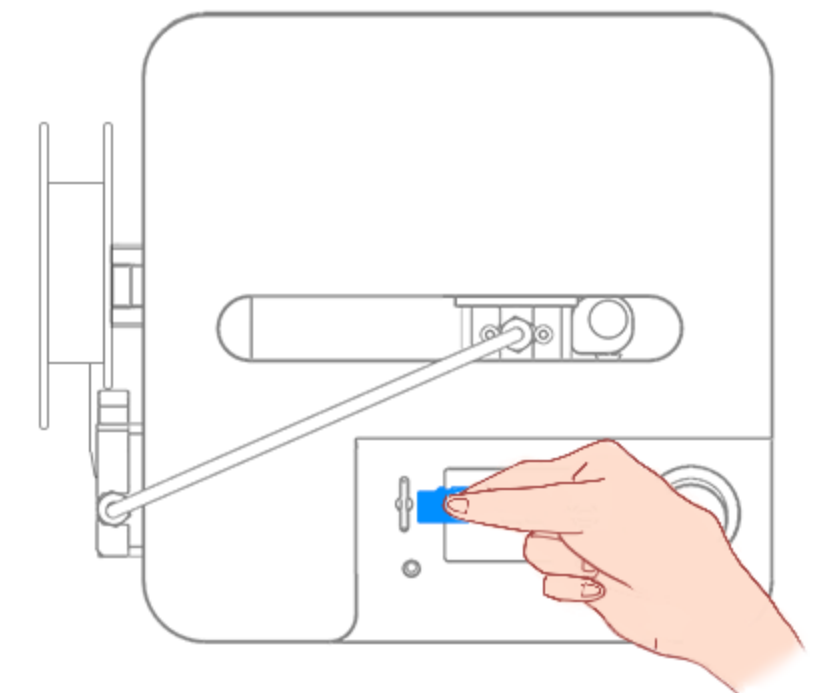
3. Press tube fitting to insert filament tube into extruder.



4. Press the extruder switch, straighten filament and insert it, until entering nozzle.



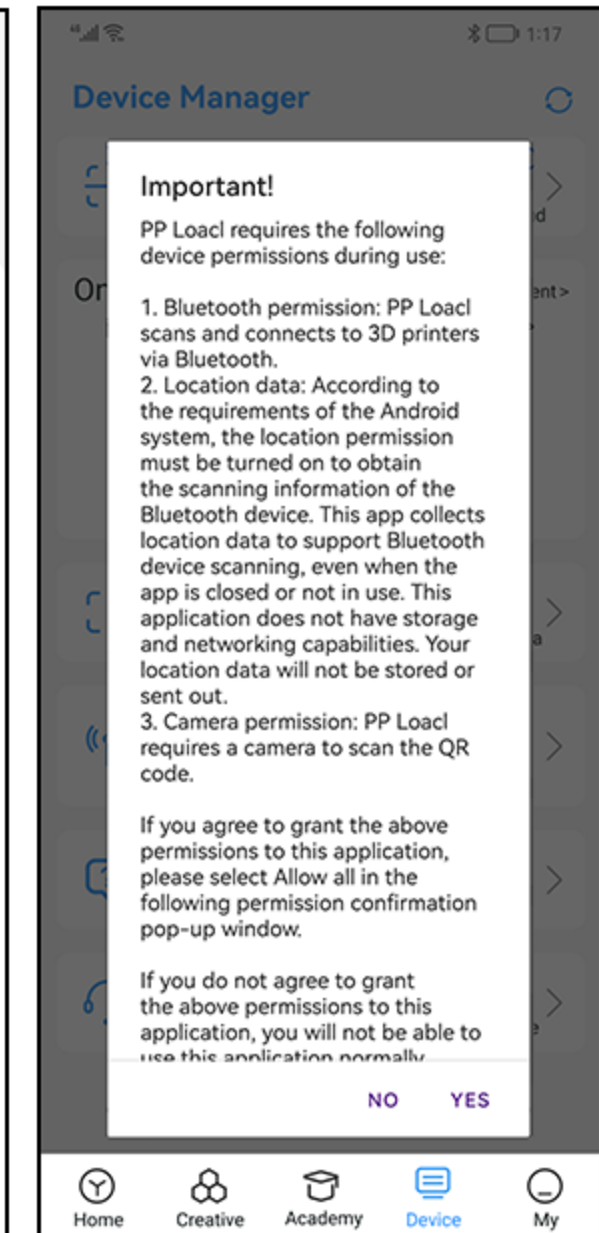
5. Plug in the power and turn on the printer.



6. Insert the TF card and start printing the test model.

# | APP

## ① Poloprint Cloud -- install

A screenshot of the Poloprint Cloud 'Sign up' screen. The screen has a white background with a light blue header. The title 'Sign up' is in bold black text, with a 'Sign in' link in blue to the right. Below the title is the instruction 'Enter your details below and free sign up'. There are four input fields: 'Your email', 'Verification code', 'Password', and 'Confirm password'. The 'Verification code' field has a blue 'Send' button to its right. The 'Password' and 'Confirm password' fields have eye icons to toggle visibility. Below these fields is a 'Nickname' field. At the bottom is a grey 'Sign up' button. At the very bottom, there is a checkbox with the text 'By creating an account you have to agree with our terms and condition.' and links for 'Terms & Conditions' and 'Privacy Policy'.A screenshot of the Poloprint Cloud 'Sign in' screen. The screen has a white background with a light blue header. The title 'Sign in' is in bold black text. Below the title are two input fields: 'Your email' and 'Password'. The 'Password' field has an eye icon to toggle visibility. Below the input fields is a blue 'Sign in' button. At the bottom, there is a link 'Don't have an account? Sign up' and a 'Forgot password?' link.

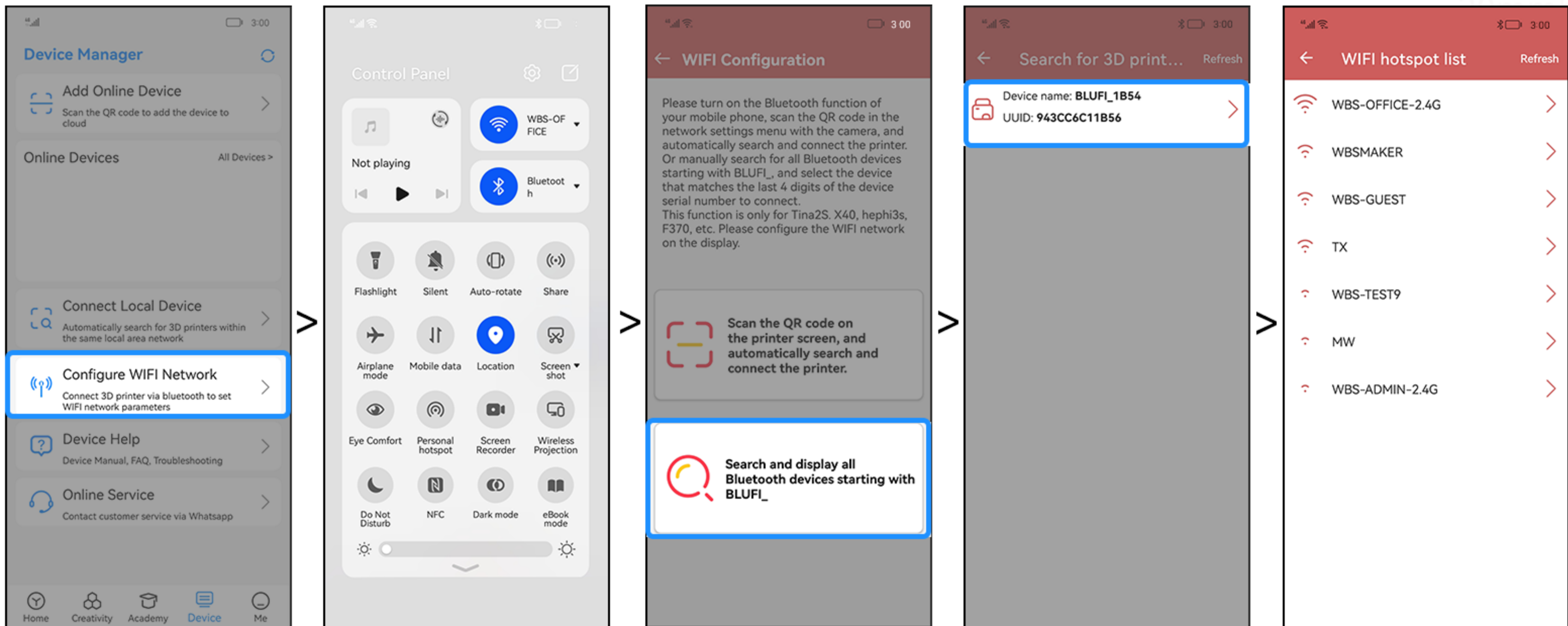
1. Scan or search to download Poloprint Cloud.

2. Sign up and sign in.

3. Click "Device" , allow all permissions.

**Note:** 1. If you are a beginner, please check out the usage guide in the app.  
2. Please agree to "ALLOW ALL THE TIME".

## ② Poloprint Cloud -- configure WIFI for 3D printer



1. Choose "WIFI Configuration".

2. Turn on "Bluetooth" and "Location".

3. Scan the code or search bluetooth.

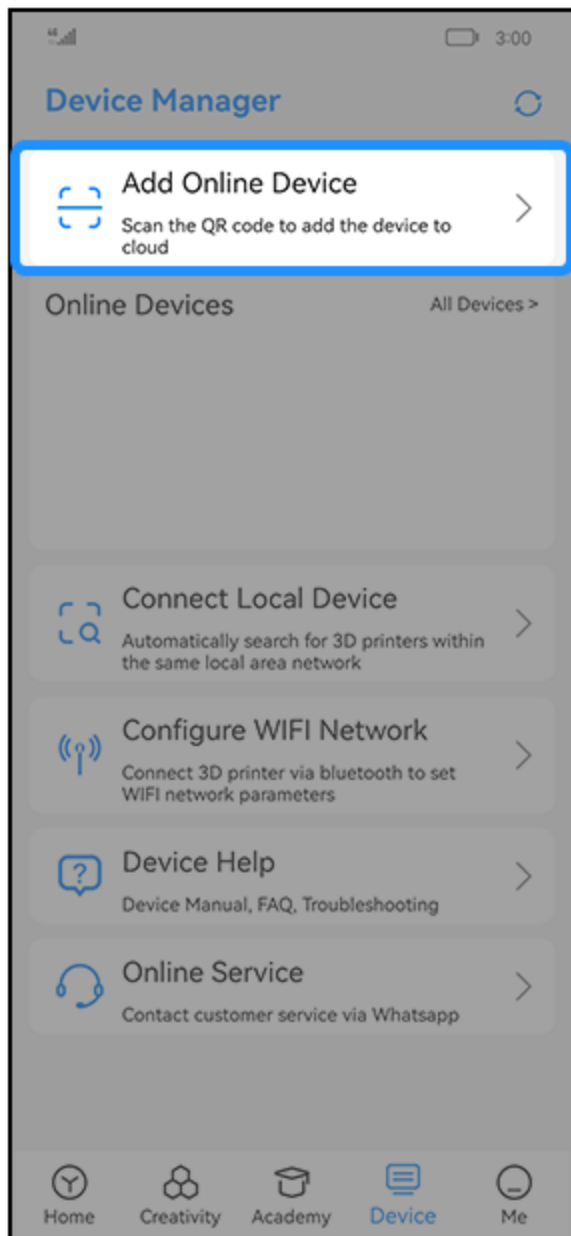
4. Click "bluetooth".

5. Select 2.4G WIFI, enter the password.

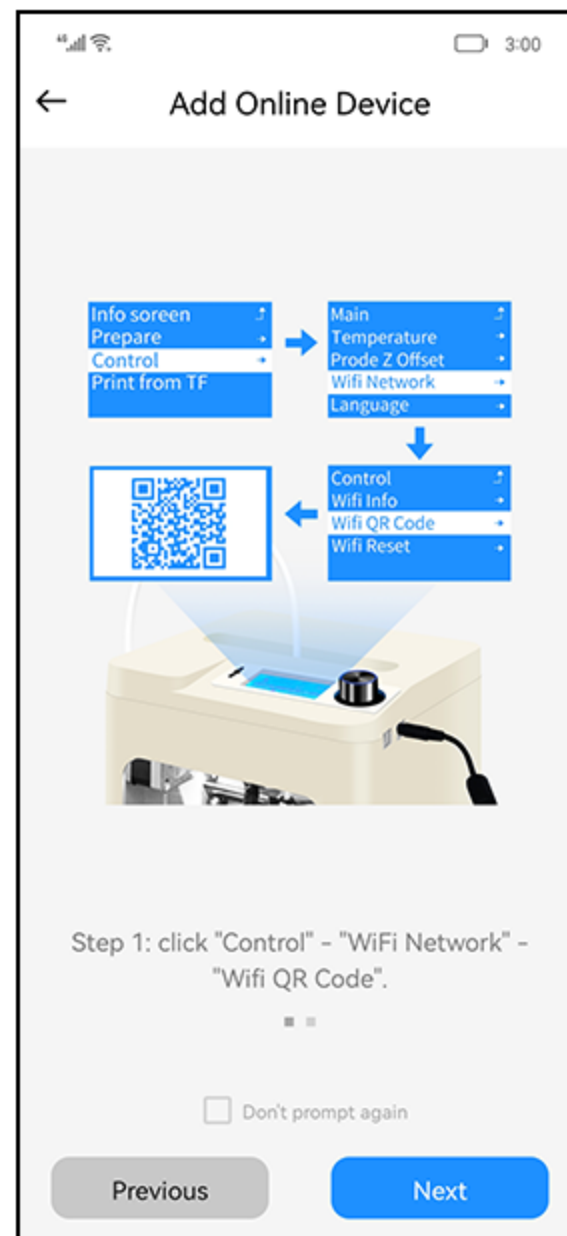
**Note:** 1. The list will only show 2.4G network. Doesn't support 5G.  
2. Tina2s will display the IP on the screen if the connection is successful.



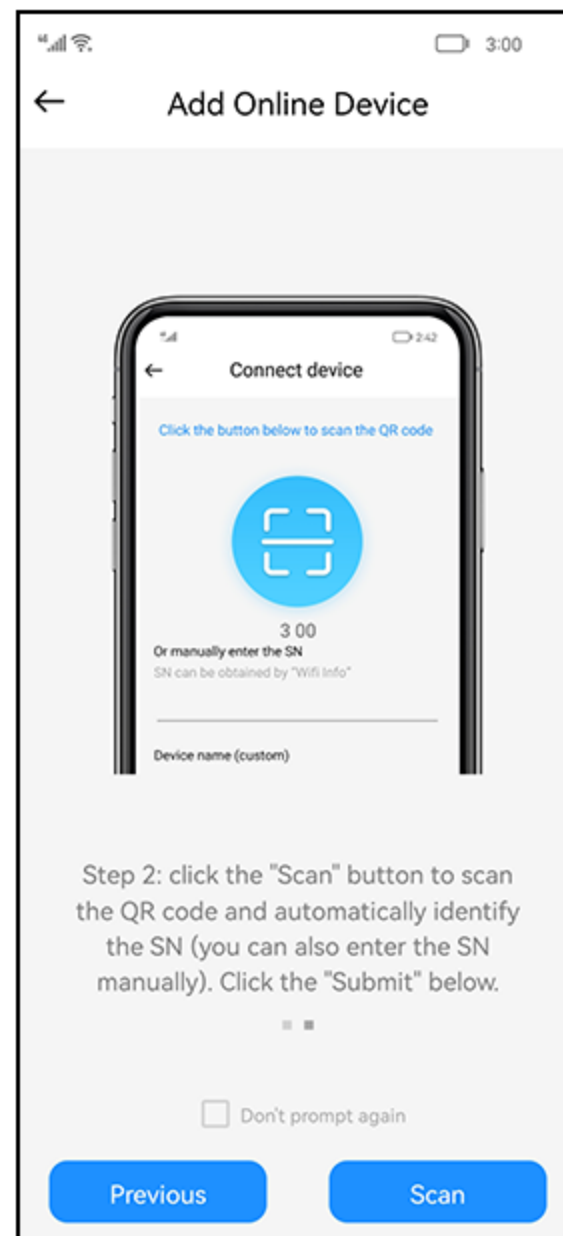
### ③ Poloprint Cloud -- connect 3D printer



1. Click "Add online device".

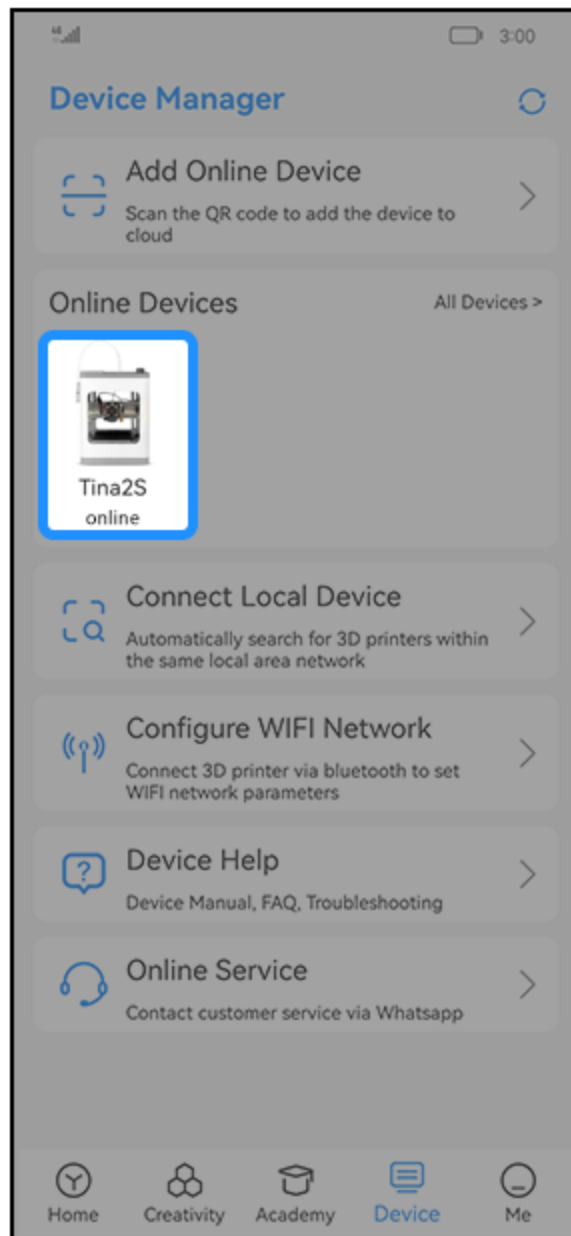


2. Operate according to the tutorial.

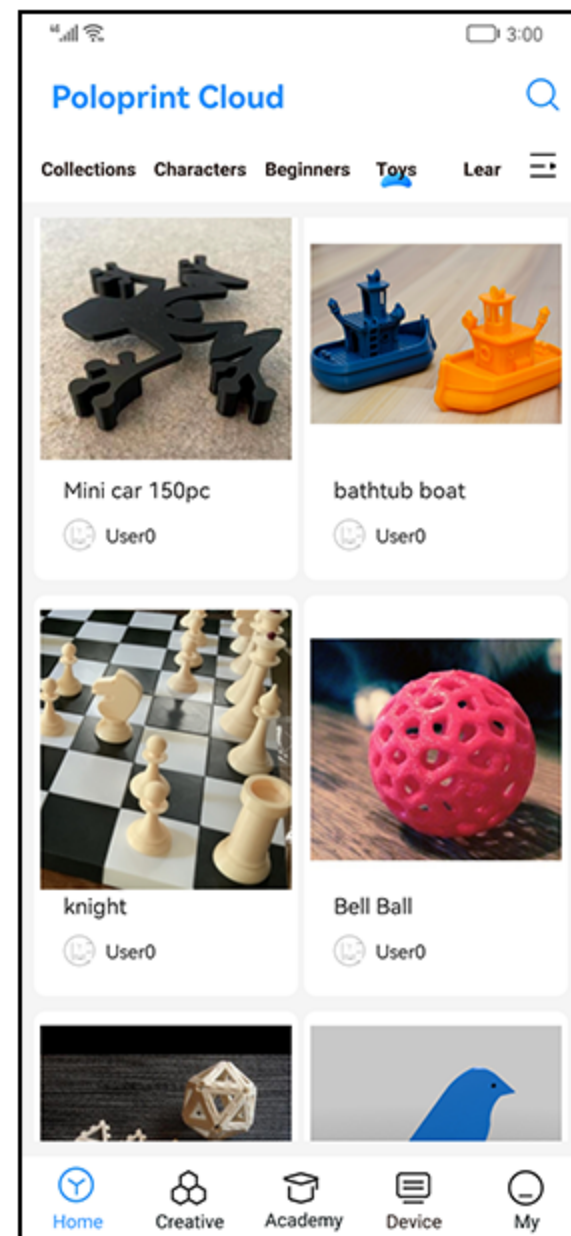


3. Scan and submit.

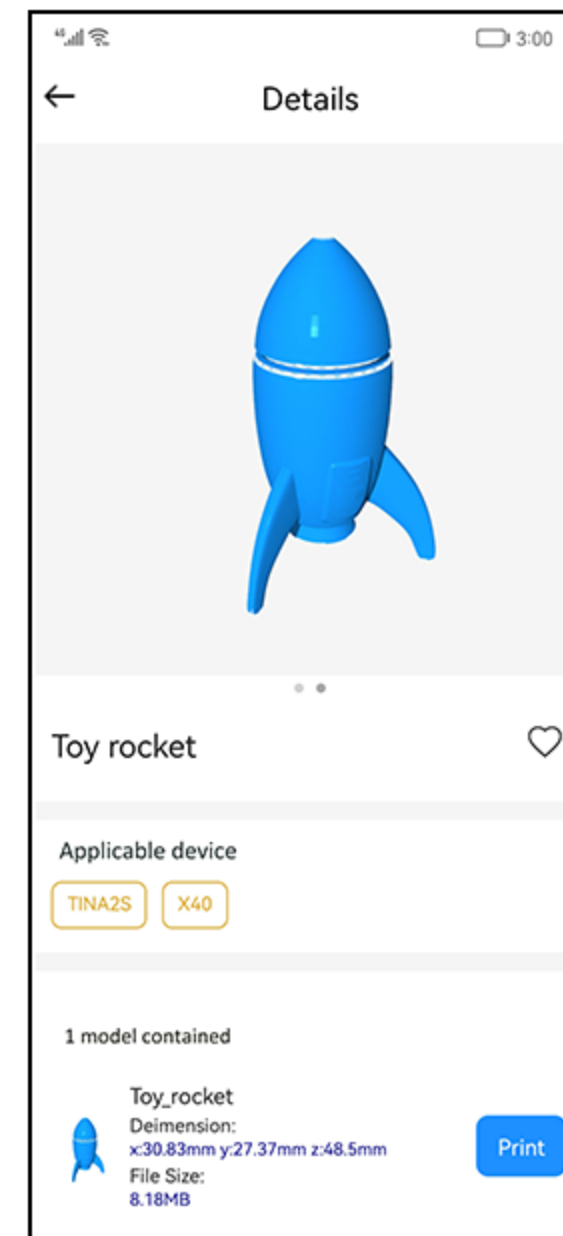
## ④ Poloprint Cloud -- print model



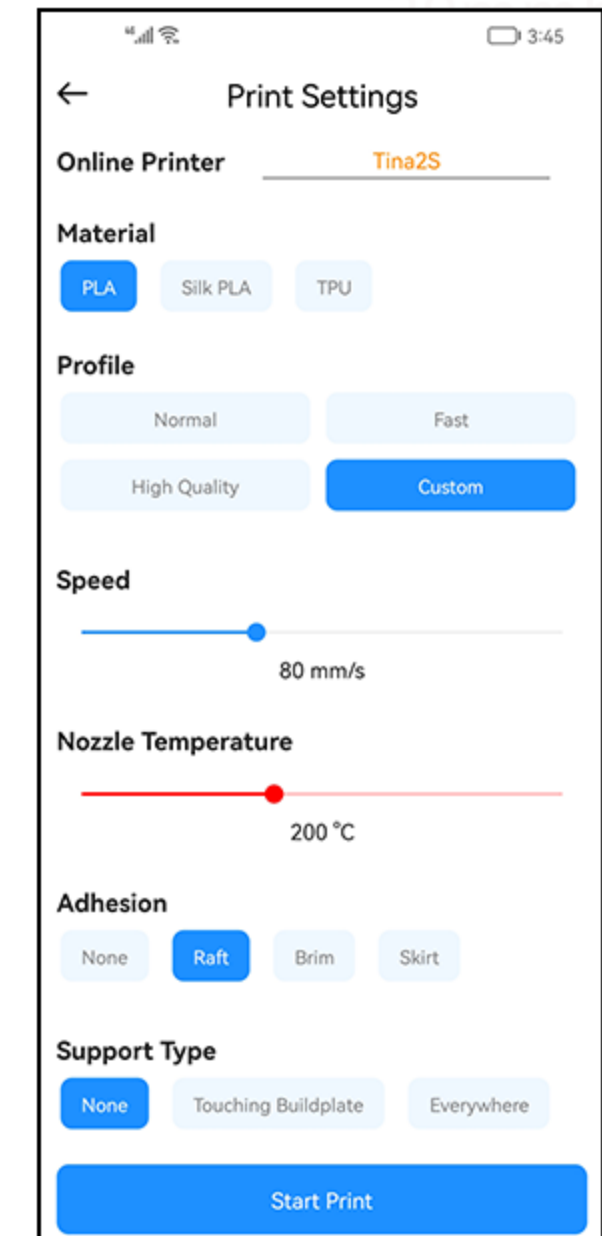
1. After the device is "online".



2. Choose a model.



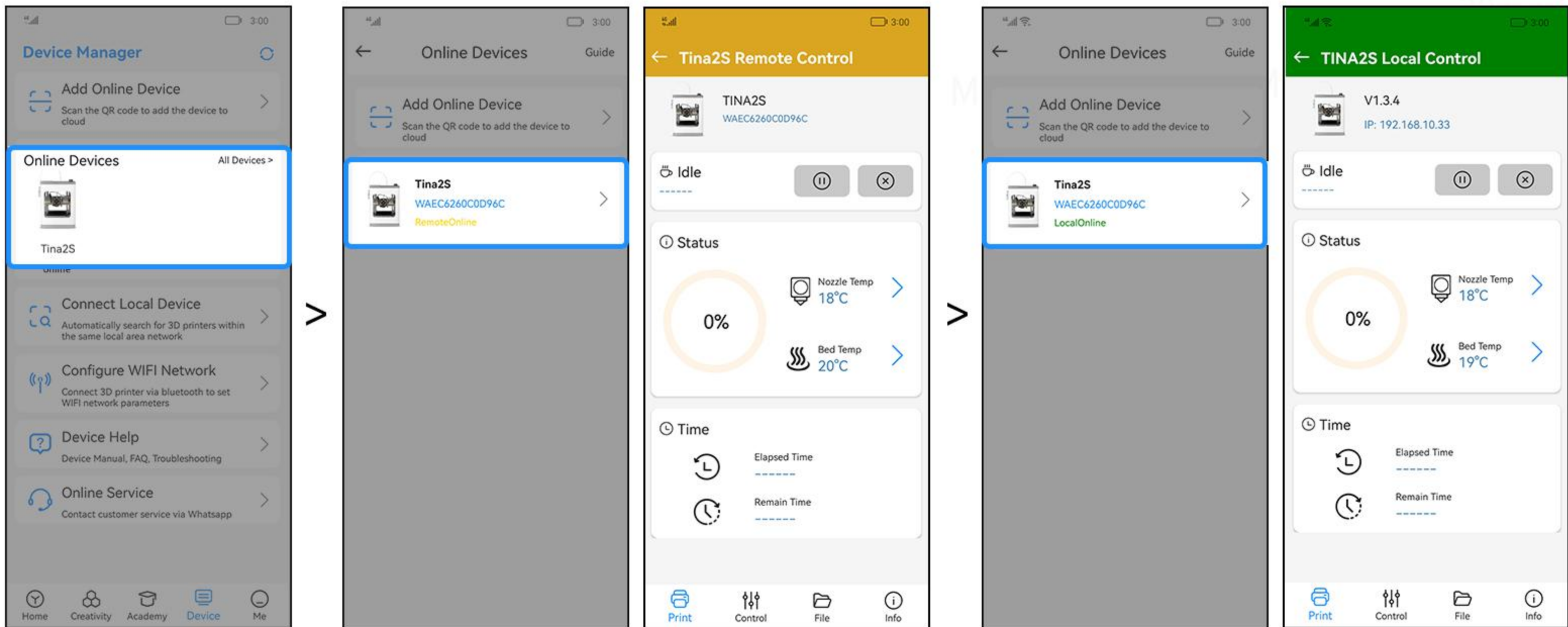
3. Click "Print".



4. Set slice parameters, click "Start Print".

**Note:** 1. The TF card must be inserted, otherwise the transmission will fail.  
2. Click "Custom" to select more parameters.

## ⑤ Poloprint Cloud -- control 3D printer

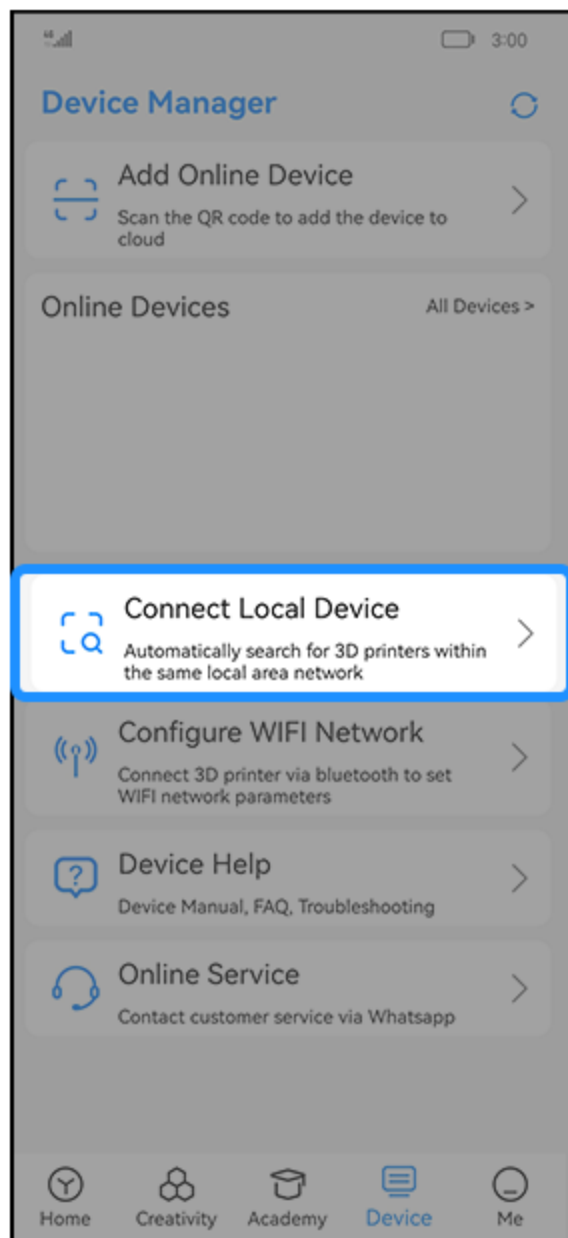


1. The app and the device are under different networks, "remote control" can be used.

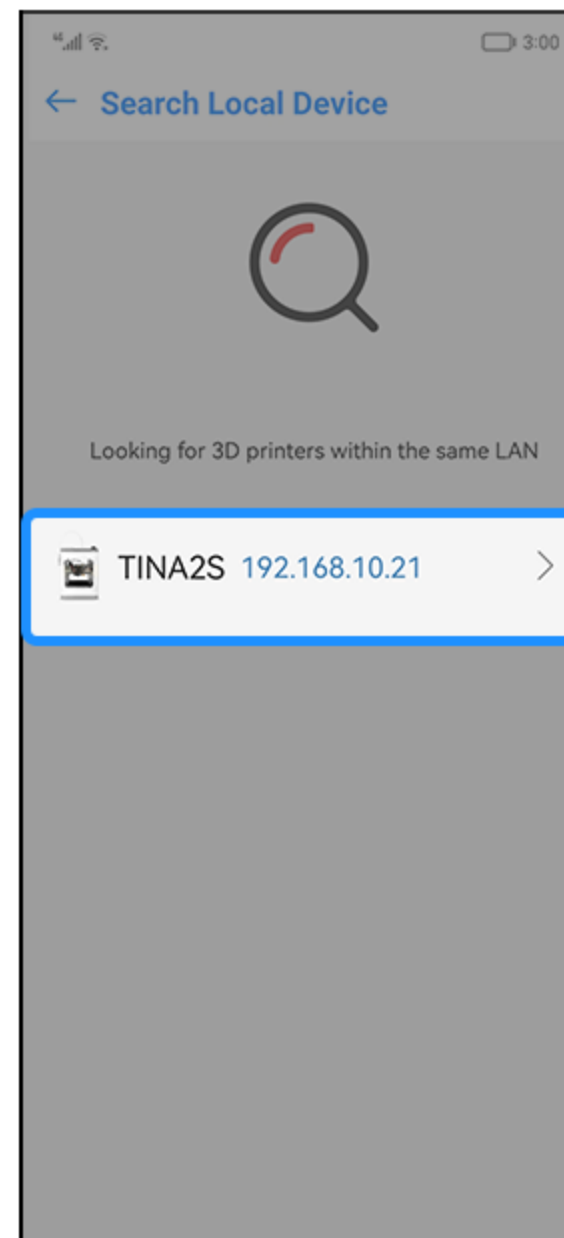
2. Under the same network, it is "local control".

**Note:** 1. "Local online" transfers faster than "remote online".  
2. "Local online" has more control functions.

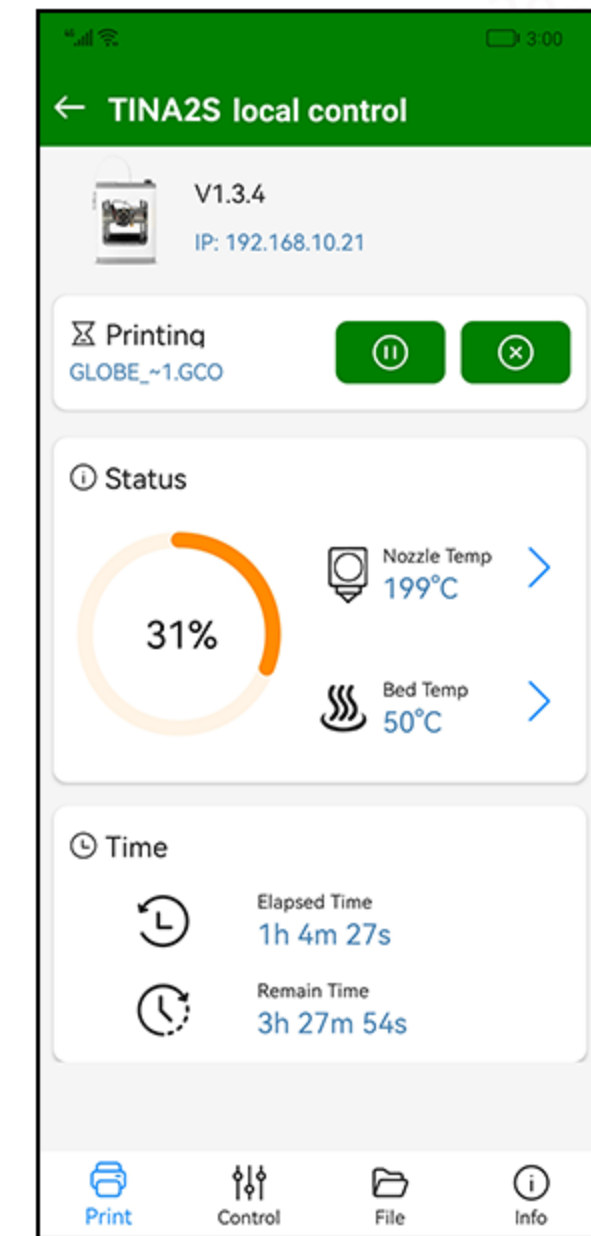
## ⑥ Poloprint Cloud -- local device



>



>



1. If the user doesn't want to access the cloud server, the local device can be used.

2. Click the IP.

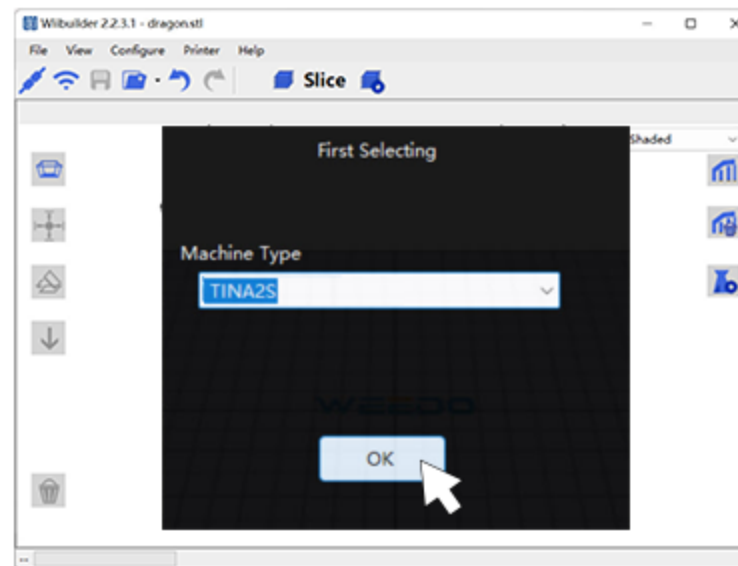
**Note:** The app must be under the same network as the device.

# | SLICING SOFTWARE

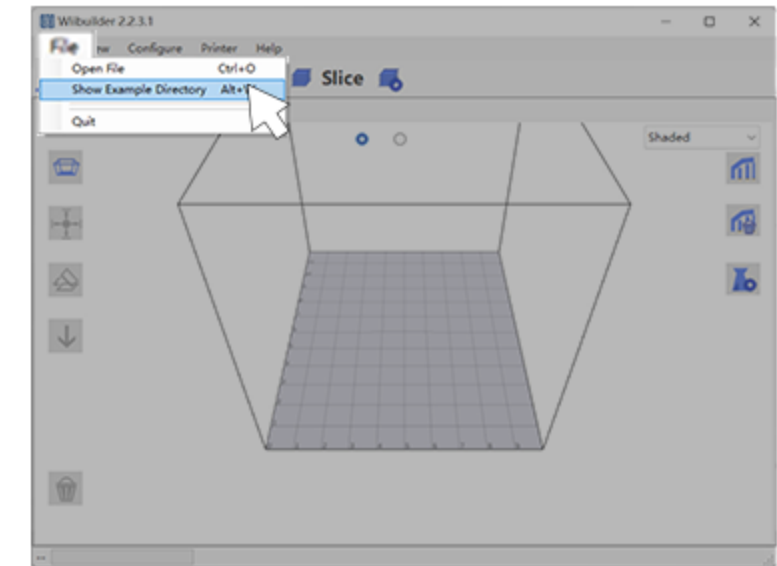
## ① Wiibuilder -- install and add models



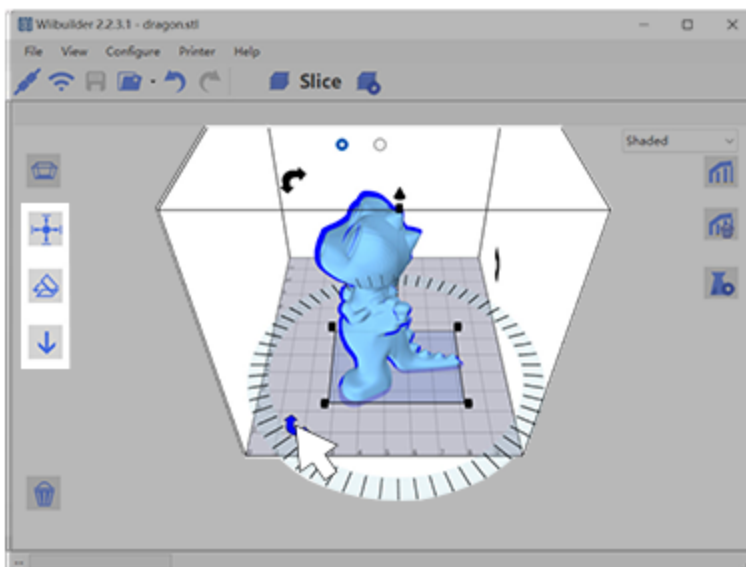
1. Install Wiibuilder stored in the TF card on the computer.



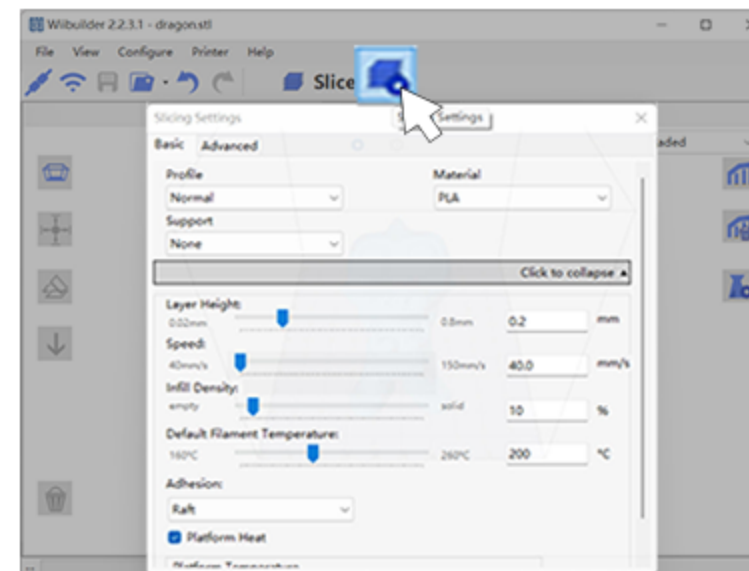
2. Open the Wiibuilder. Select the printer.



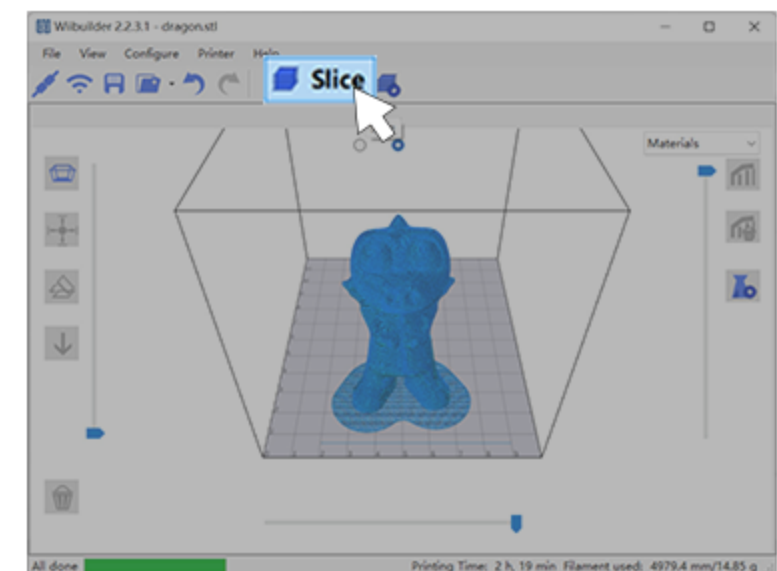
3. Click "File" to load stl.file or just drag the model into it.



4. Click and adjust the model.

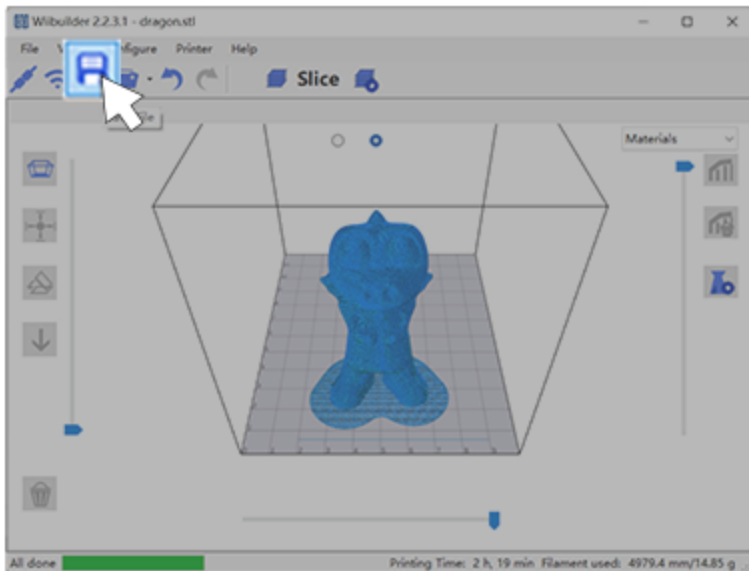


5. Set slicing parameters .

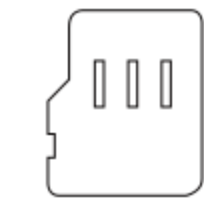


6. Click "Slice", get gcode.file

## ② Send files by TF card



1. Click "Save File".



TF card

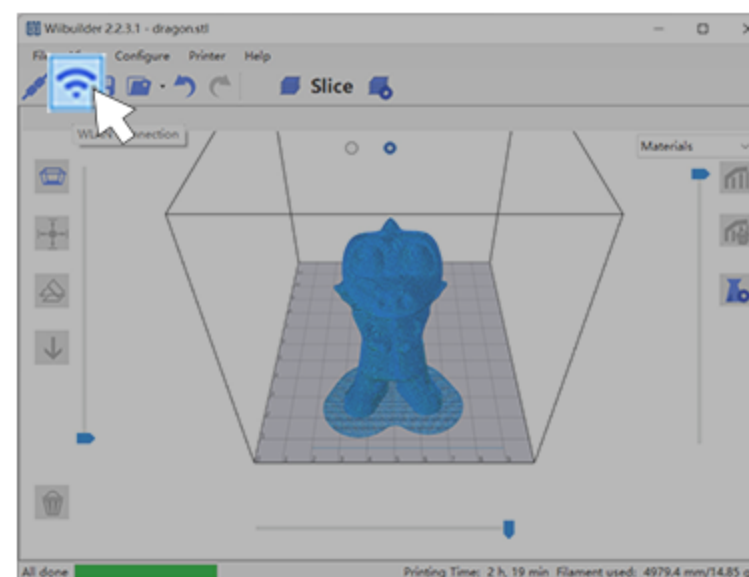


3. Insert the TF card into the printer. Print the file.

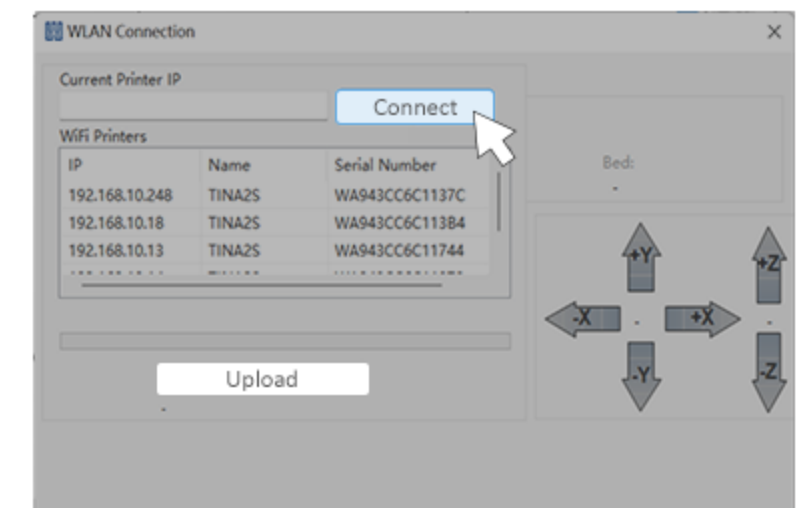
## ③ Send files by the network



1. The info screen show the IP address.

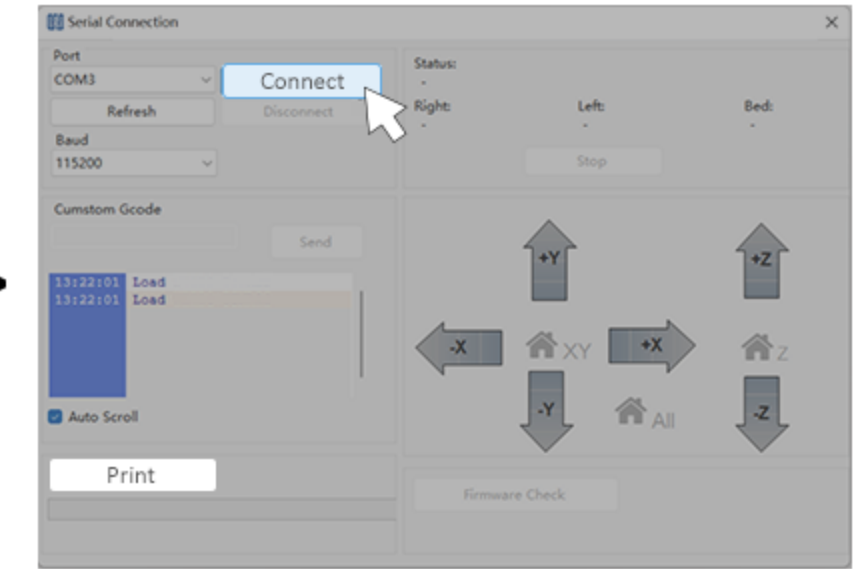
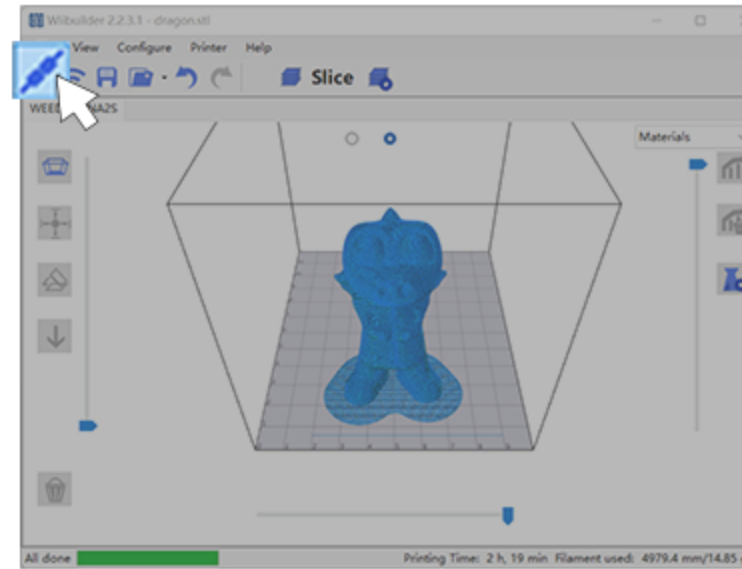
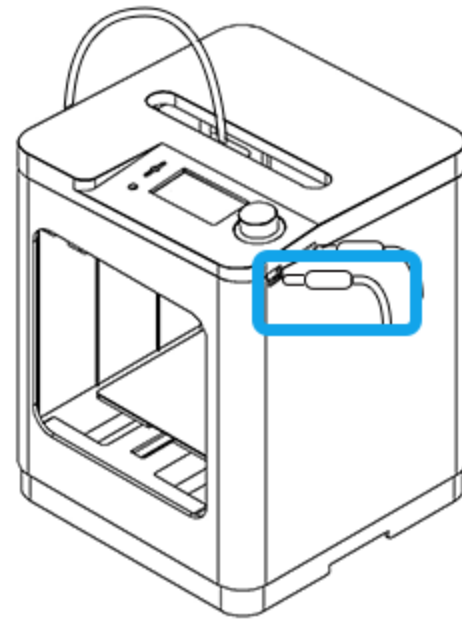


2. Click "WLAN Connection".



3. Choose IP address, click "Connect", "Upload".

## ④ Send files by USB



1. The USB driver in the TF card should be installed first.

2. Connect Tina2s and computer with USB.

3. Click "Connect Printer".

4. Click "Connect", "Print".

## | HELP

1. Users can inquire more about 3D printer knowledge in Poloprint Cloud and manual.
2. The nozzle will be clogged due to the damp filament, so the nozzle should be cleaned regularly. You can view the video of cleaning the nozzle in the TF card.
3. If the device fails, you can check 【Academy】 , or 【Device】 - 【Device Help】 in Poloprint Cloud. You can also use the 【Log】 function (LAN) in Poloprint Cloud.
4. If you have problems that can't be solved, please view the videos linked on our support site at: <https://sansystechnology.com/support/> OR contact technical support at [sansysconnect@gmail.com](mailto:sansysconnect@gmail.com)